



## Features

- 3000K color temperature with 90+ CRI
- Low-profile fixture fits in a multitude of locations
- Available in four common size fixture lengths: 6" / 16" / 22" / 32"
- Seamless design featuring additional connector accessories: L, T, and X Connectors
- Lumen output up to 1100Lm per fixture
- 16.4ft maximum link-ability
- Diffused lens for smooth, evenly distributed light
- Plug and play system for quick installation
- cETLus Listed for indoor, dry locations

## Available Sizes

6" / 16" / 22" / 32"

## Available Finish



Satin Aluminum

## Dimming Options

- CL (5-100%)
- ELV (5-100%)

## Listing / Ratings



## MicroLink - 24V

The new MicroLink linkable fixtures provides a simple & effective task or accent lighting solution perfect for new construction or remodel application. Achieve stylish task or accent lighting simply by linking the slim profile fixtures to create tailored lighting applications with ease. Additional quick connect accessories make for easy work with more complex installations that allow for right or left angles as well as cross connections.

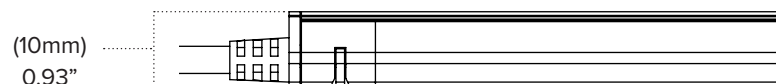
## Technical Information

Series	MLINK
Input Voltage	24V DC
CCT	3000K
CRI	90+
Wattage	Up to 12.2W
Lumens	Up to 1100Lm
Beam Angle	120°
Max Run	16.4ft
Dimmable	5-100%
Mounting	Surface mount
Rating	cETLus Listed (dry location)
Rated Life	35,000 hrs

Top Profile



Side Profile



# MicroLink



- MLINK-30-6** (6-3/16" / 2.5W / 200Lm)
- MLINK-30-16** (15-11/16" / 6W / 520Lm)
- MLINK-30-22** (21-1/8" / 8W / 720Lm)
- MLINK-30-32** (32-5/8" / 12.5W / 1100Lm)

MicroLink fixtures include: (1) Attached 6" Female DC Power Connection / (2) Mounting Clips / (1) End cap

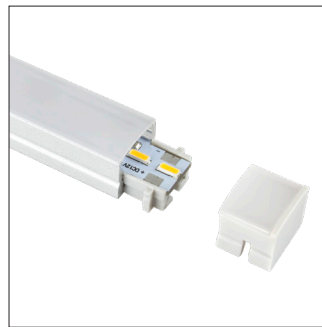
## MicroLink Accessories



Power Connector Kit  
Includes DC jack connector  
**MLINK-CONKIT**



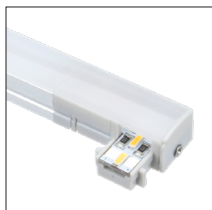
Linking cable  
**MLINK-JUMP-6** (6")  
**MLINK-JUMP-12** (12")  
**MLINK-JUMP-24** (24")  
**MLINK-JUMP-36** (36")



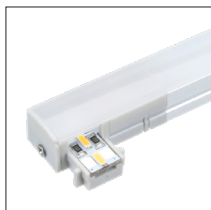
End cap  
**MLINK-END**



4" Mounting clip  
**MLINK-CLIP-4**



90° Connector  
(Left)  
**MLINK-L**



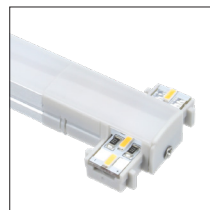
90° Connector  
(Right)  
**MLINK-R**



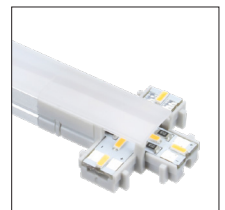
T Connector  
(Left)  
**MLINK-TL**



T Connector  
(Right)  
**MLINK-TR**



T Connector  
(End)  
**MLINK-TM**



X Connector  
**MLINK-X**